



**Smart Transducer
Series**

Light weight
Easy to handle
Smart design

•ARIETTA, Noblus and Real-time Virtual Sonography are registered trademarks or trademarks of Hitachi, Ltd. in Japan and other countries.
•Specifications and appearance may be subject to change for improvement without notice.
•For proper use of the system, be sure to read the operating manual prior to placing it into service.



We strive to provide quality products and services for our customers.
We operate with regard for the environment.

Smart Transducers

ARIETTA



Real-time Virtual Sonography is supported by ARIETTA 70



Convex Transducers

The broad range of convex transducers are suitable for various general examinations, and feature a comfortable grip, compact lightweight design and flexible cable.



L44

Small parts
9 - 4 MHz
38 mm



S31

Cardiology
9 - 2 MHz
90 deg.



C42T

Intraoperative
10 - 3 MHz
65 deg. (20R)



C251

Abdomen
5 - 1 MHz
70 deg. (50R)



L441

Small parts
12 - 2 MHz
38 mm



S42

Cardiology
14 - 3 MHz
90 deg.



C22T

Intraoperative
6 - 1 MHz
82 deg. (20R)



C35

Abdomen
8 - 2 MHz
70 deg. (50R)



L55

Small parts
13 - 5 MHz
50 mm



Biopsy/Intraoperative Transducers

One key advantage of ultrasound imaging is the ability to monitor biopsy procedures in real time. The range of dedicated biopsy and intraoperative transducers are designed for ease-of-use, and to support safe surgery and accurate interventions.



C22I

Intraoperative
6 - 1 MHz
82 deg. (20R)



C41

Abdomen
13 - 4 MHz
100 deg. (12R)



L64

Small parts
18 - 5 MHz
38 mm



C22P

Biopsy
6 - 1 MHz
74 deg. (22R)



† Photo taken with RVS Attachment (standard component)

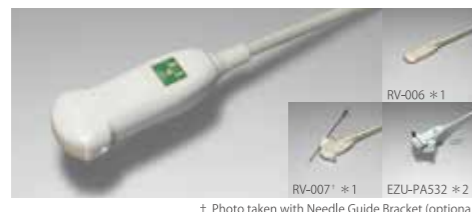
L43K

Intraoperative
12 - 2 MHz
26 mm



C42

Abdomen
8 - 4 MHz
80 deg. (21R)



† Photo taken with Needle Guide Bracket (optional)

Sector Transducers

The compact size and ergonomic profile facilitate easy operation for intercostal imaging. A significant increase in the frequency bandwidth is achieved by adopting single crystal transducer technology. For cardiology applications, sector transducers combine high frame rates with outstanding diagnostic performance.



C25P

Biopsy
5 - 1 MHz
70 deg. (50R)



† Photo taken with Biopsy Attachment (optional)

L44LA

Intraoperative
13 - 2 MHz
36 mm



Linear Transducers

Linear transducers with a wide frequency bandwidth provide high quality images and are designed for the imaging of an extensive variety of superficial tissues such as the thyroid gland, breast and peripheral vessels.



S12

Cardiology (ARIETTA 70)
5 - 1 MHz
90 deg.



C42K

Intraoperative
10 - 4 MHz
65 deg. (21R)



L44LA1

Intraoperative
13 - 2 MHz
38 mm



L34

Small parts
7 - 3 MHz
38 mm



S211

Cardiology (ARIETTA 60)
5 - 1 MHz
90 deg.



C22K

Intraoperative
6 - 1 MHz
82 deg. (21R)



L53K

Intraoperative
15 - 3 MHz
25 mm



Light weight • Easy to handle • Smart design

Smart Transducers

ARIETTA



Real-time Virtual Sonography is supported by ARIETTA 70

L44K

Intraoperative
14 - 2 MHz
42 mm



VL54

Small parts
13 - 5 MHz
38 mm



EZU-PA7LV1 *2

R41RL

Transrectal
10 - 5 MHz
360 deg. (6R)



L46K

Intraoperative
13 - 3 MHz
60 mm



MP-2448 *6

Transvaginal, Transrectal Transducers

The diverse lineup of transducers support a wide variety of clinical uses. This includes our original real-time biplane method, the 360° radial transducer for observation of the prostate, anal canal and rectum, end-fire method for easy biopsy, and the transvaginal transducer with improved shape to reduce discomfort for the patient.



C41L47RP

Transrectal
C: 8 - 4 L: 10 - 5 MHz
C: 200 deg. (10R) L: 64 mm



EZU-PA3U *9

RV-011 *1

L46K1

Intraoperative
14 - 2 MHz
63 mm



C41B

Transvaginal, Transrectal
10 - 2 MHz
200 deg. (10R)



MP-2445 *8

RV-013

Transesophageal Transducers

Transesophageal transducers depict the heart and surrounding structures with high definition. With a fine tip that enables easy operation, they are designed for patient comfort while maintaining excellent image quality.



S31KP

Biopsy/Intraoperative
8 - 3 MHz
90 deg.



† Photo taken with Puncture Adapter MP-2450 (standard component)

C41V1

Transvaginal
10 - 2 MHz
200 deg. (10R)



EZU-PA7V *7

RV-002 *1

S3ESEL

Cardiology (ARIETTA70)
8 - 2 MHz
90 deg.



3D/4D Transducers

The compact and light weight 3D/4D transducers allow examinations to be performed with less strain on the examiner.



C41RP

Transrectal
9 - 2 MHz
180 deg. (9R)



MP-2452-G16 *8

† Puncture Adapter MP-2452-G18 for C41RP transducer is standard component

S3ESL1

Cardiology
9 - 2 MHz
90 deg.



VC34

Abdomen
7 - 2 MHz
70 deg. (40R)



CC41R

Transrectal
8 - 4 MHz
(Both sagittal and axial scan head)
100 deg. (Sagittal scan)/
120 deg. (Axial scan) (10R)



EZU-PA5V *7

RV-010 *1

VC41V

Transvaginal
8 - 2 MHz
140 deg. (10R)



R41R

Transrectal
10 - 5 MHz
360 deg. (6R)



This brochure is applicable to ARIETTA 70, ARIETTA S70 and ARIETTA V70. The word, ARIETTA 70 in the brochure is deemed to be ARIETTA 70, ARIETTA S70 or ARIETTA V70, as the case may be.
This brochure is applicable to ARIETTA 60, ARIETTA S60 and ARIETTA V60. The word, ARIETTA 60 in the brochure is deemed to be ARIETTA 60, ARIETTA S60 or ARIETTA V60, as the case may be.

Smart Transducers

Noblus

Advanced Versatile Ultrasound Scanner



Convex Transducers

The broad range of convex transducers are suitable for various general examinations, and feature a comfortable grip, compact lightweight design and flexible cable.



Linear Transducers

Linear transducers with a wide frequency bandwidth provide high quality images and are designed for the imaging of an extensive variety of superficial tissues such as the thyroid gland, breast and peripheral vessels.



Sector Transducers

The compact size and ergonomic profile facilitate easy operation for intercostal imaging. A significant increase in the frequency bandwidth is achieved by adopting single crystal transducer technology. For cardiology applications, sector transducers combine high frame rates with outstanding diagnostic performance.



C22K

Intraoperative
6 - 1 MHz
82 deg. (21R)



C251

Abdomen
5 - 1 MHz
70 deg. (50R)



L34

Small parts
7 - 3 MHz
38 mm



S211

Cardiology
5 - 1 MHz
90 deg.



C42T

Intraoperative
10 - 3 MHz
65 deg. (20R)



C 35

Abdomen
8 - 2 MHz
70 deg. (50R)



L44

Small parts
9 - 4 MHz
38 mm



S31

Cardiology
9 - 2 MHz
90 deg.



C22T

Intraoperative
6 - 1 MHz
82 deg. (20R)



C41

Abdomen
13 - 4 MHz
100 deg. (12R)



L441

Small parts
12 - 2 MHz
38 mm



Biopsy/Intraoperative Transducers

One key advantage of ultrasound imaging is the ability to monitor biopsy procedures in real time. The range of dedicated biopsy and intraoperative transducers are designed for ease-of-use, and to support safe surgery and accurate interventions.



C22I

Intraoperative
6 - 1 MHz
82 deg. (20R)



C42

Abdomen
8 - 4 MHz
80 deg. (21R)



L55

Small parts
13 - 5 MHz
50 mm



C22P

Biopsy
6 - 1 MHz
74 deg. (22R)



L43K

Intraoperative
12 - 2 MHz
26 mm



L64

Small parts
18 - 5 MHz
38 mm



C42K

Intraoperative
10 - 4 MHz
65 deg. (21R)



L44LA

Intraoperative
13 - 2 MHz
36 mm



Light weight • Easy to handle • Smart design

Smart Transducers

Noblus

Advanced Versatile Ultrasound Scanner



L44LA1

Intraoperative
13 - 2 MHz
38 mm



C41V

Transvaginal
8 - 4 MHz
200 deg. (10R)



EZU-PA 5V *7

Transesophageal Transducers

Transesophageal transducers depict the heart and surrounding structures with high definition. With a fine tip that enables easy operation, they are designed for patient comfort while maintaining excellent image quality.



S31KP

Biopsy/Intraoperative
8 - 3 MHz
90 deg.



† Photo taken with Puncture Adapter MP-2450 (standard component)

C41V1

Transvaginal
10 - 2 MHz
200 deg. (10R)



EZU-PA7V *7

S3ESEL

Cardiology
8 - 2 MHz
90 deg.



3D/4D Transducers

The compact and light weight 3D/4D transducers allow examinations to be performed with less strain on the examiner.



CC41R

Transrectal
8 - 4 MHz
(Both sagittal and axial scan head)
100 deg.(Sagittal scan)/
120 deg.(Axial scan)(10R)



EZU-PA5V *7

S3ESL1

Cardiology
9 - 2 MHz
90 deg.



VC34A

Abdomen
7 - 2 MHz
67 deg. (40R)



R41R

Transrectal
10 - 5 MHz
360 deg. (6R)



Transvaginal, Transrectal Transducers

The diverse lineup of transducers support a wide variety of clinical uses. This includes our original real-time biplane method, the 360° radial transducer for observation of the prostate, anal canal and rectum, end-fire method for easy biopsy, and the transvaginal transducer with improved shape to reduce discomfort for the patient.



C41L47RP

Transrectal
C: 8 - 4 L: 10 - 5 MHz
C: 200 deg. (10R)L: 64 mm



EZU-PA3U *9

C41B

Transvaginal, Transrectal
10 - 2 MHz
200 deg. (10R)



MP-2445 *8

Light weight • Easy to handle • Smart design

Smart Transducers



*# (Optional)

- *1 RVS Attachment
- *2 Needle Guide Bracket
- *3 Coupler Attachment
- *4 Acoustic coupler attachment
- *5 Biopsy Attachment
- *6 Puncture Adapter
- *7 Sterile Puncture Adapter
- *8 Puncture guide tube
- *9 Puncture Guide Fixture

List of optional Transducers [Notes] ○ Available -Not available

Convex Transducers	ARIETTA 70	ARIETTA 60	Noblus
C251	○	○	○
C35	○	○	○
C41	○	○	○
C42	○	○	○
EUP-C715	-	-	○ **1
UST-9130	○ **3	-	-
Linear Transducers	ARIETTA 70	ARIETTA 60	Noblus
L34	○	○	○
L44	-	○	○
L441	○	○	○
L55	○	○	○
L64	○	○	○
EUP-L53L	-	-	○ **1
EUP-L74M	-	-	○ **1
Sector Transducers	ARIETTA 70	ARIETTA 60	Noblus
S12	○	-	-
S211	-	○	○
S31	○	○	○
S42	○	-	-
UST-52105	○ **4	-	-
Biopsy/Intraoperative Transducers	ARIETTA 70	ARIETTA 60	Noblus
C22P	○	○	○
C25P	○	○	-
EUP-B512	-	-	○ **1
EUP-B715	-	-	○ **1
C22K	○	○	○
C42K	○	○	○
C42T **6	○	○	-
C22T **6	○	○	○
C22I **6	○	○	○
L43K **6	○	○	○
L44LA	○	○	-
L44LA1 **6	○	○	○
L53K **6	○	-	-
L44K **6	○	○	-
L46K **6	○	○	-
L46K1 **6	○	-	-

S31KP **6	○	○	-
UST-5418	○ **3	○ **3	-
UST-5550	○ **3	○ **3	-
UST-9132I	○ **3	○ **3	-
UST-533	○ **3	-	-
EUP-O53T	-	-	○ **1
EUP-O54J	○ **2	○ **2	○ **1
EUP-O732T	-	-	○ **1
EUP-OL334	-	-	○ **1
4D Transducers	ARIETTA 70	ARIETTA 60	Noblus
VC34	○	○	-
VC34A	-	-	○
VC41V	○	○	-
VL54	○	○	-
EUP-VV531	-	-	○ **1
Transvaginal, Transrectal Transducers	ARIETTA 70	ARIETTA 60	Noblus
C41B **6	○	○	○
C41V	-	-	○
C41V1	○	○	○
C41RP **6	○	○	-
CC41R **6	○ Support Real-time Biplane	○ Support Real-time Biplane	○ Support Real-time Biplane
R41R **6	○	○	○
R41RL **6	○	○	-
C41L47RP	○	○	○
EUP-U531	-	-	○ **1
EUP-CC531S	-	-	○ Support Real-time Biplane **1
EUP-R54AW-19	-	-	○ **1
EUP-R54AW-33	-	-	○ **1
Transesophageal Transducers	ARIETTA 70	ARIETTA 60	Noblus
S3ESL1	○	○	○
UST-52119S	○ **4	-	-
Motorized Transesophageal Transducers	ARIETTA 70	ARIETTA 60	Noblus
S3ESEL	○	-	-
UST-52126	○ **4	○ **4	-
Independent Transducers	ARIETTA 70	ARIETTA 60	Noblus
UST-2265-2	○	○	○ **5
UST-2266-5	○	○	-

**1 Cart (EZU-HC1N) for Noblus and transducer extension unit (EZU-AB8) are necessary for connecting. **2 Junctuin Box (JB-293) for ARIETTA is necessary for connecting. **3 Junction Box (JB-294B) for ARIETTA is necessary for connecting. **4 Junction Box (JB-295B) for ARIETTA is necessary for connecting. **5 Junction Box (EZU-JBD1) for Noblus is necessary for connecting. **6 Compatible to Waterproof case (WP-001).